



imperial
surfaces

www.imperial-surfaces.com

imperial



Based in Udaipur, India , Imperial Surfaces is one of the well known suppliers of engineered stones that find a variety of applications in the building and construction industry. Over the years we have become a leading exporter of quartz surfaces in the market. Our collection of engineered quartz is an amalgamation of luxury and functionality. Our surfaces are a solution to all the innate deficiencies of natural stone. Enhanced durability and strength, low maintenance costs, and the ability to be customizable to the end users' choice and preference makes our engineered stone a perfect option for both residential and commercial purposes. We aim to provide premium quality stone for diverse tastes and styles to elevate your living space.

'Designs at Imperial Surfaces are a unique blend of functionality and aesthetics, practicality and elegance. Our designs redefine luxury and reflect elegance and sophistication.'



Mission

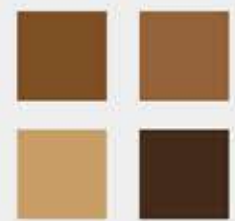
Our values have always been instrumental in guiding us when it comes to delivering the highest quality of the quartz slabs. We help convert your dream projects into reality by offering a comprehensive range of countertop fabrication, helping you make more of your space at a better value.

Our aim at Imperial Surfaces is not to gain a one time client rather to nurture a long term mutually beneficial business relationship. We take pride in maintaining and sustaining relations with our clients . To achieve this , we have a strict action plan.

We **focus** on

- Ethical Business Practices
- Timely Delivery
- Stringent Quality Control
- Exceptional Customer Service
- Constant Innovation

We are proud and grateful that our existing loyal customers do the work of marketing for us . The realisation that no marketing policy is as good as recommendations and reference by a satisfied customer, motivates us to achieve and maintain quality and service standards.



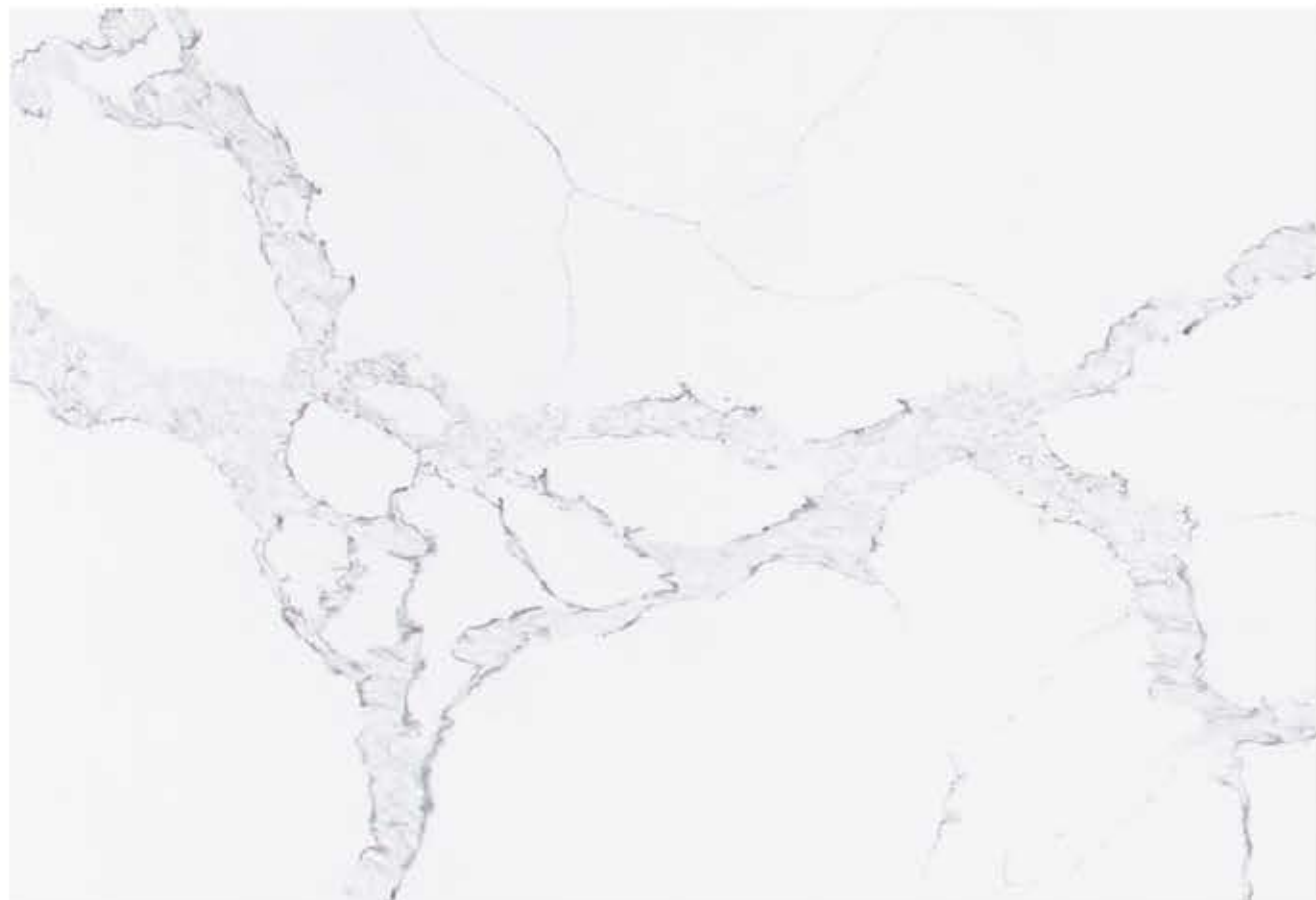
Quartz

Quartz is one of the hardest minerals on earth. One of the reasons why quartz is a popular choice as a countertop material is its strength and abundance. Stunning elegance, distinctive durability and subtle beauty of our designs, patterns and finishes bring sophistication, allure and functional luxury to the interior space wherever they are used.

We excel in making supreme prefab quartz countertops, providing a wide range of design possibilities for various types of interiors. Beauty should last, and our products are no exception. Our quartz countertops are resistant to stains, scratches and chipping and provide a solid surface to build your kitchen or bathroom around.



everest
SERIES



Calacatta Bella



Calacatta Bergen



Calacatta Ice



Calacatta Oslina



Calacatta Venice



Calacatta Venezia



Calacatta Verona



Calacatta Tree



Calacatta Neo Gold



Neo Marquina



luxor
SERIES



Bianco Carrara



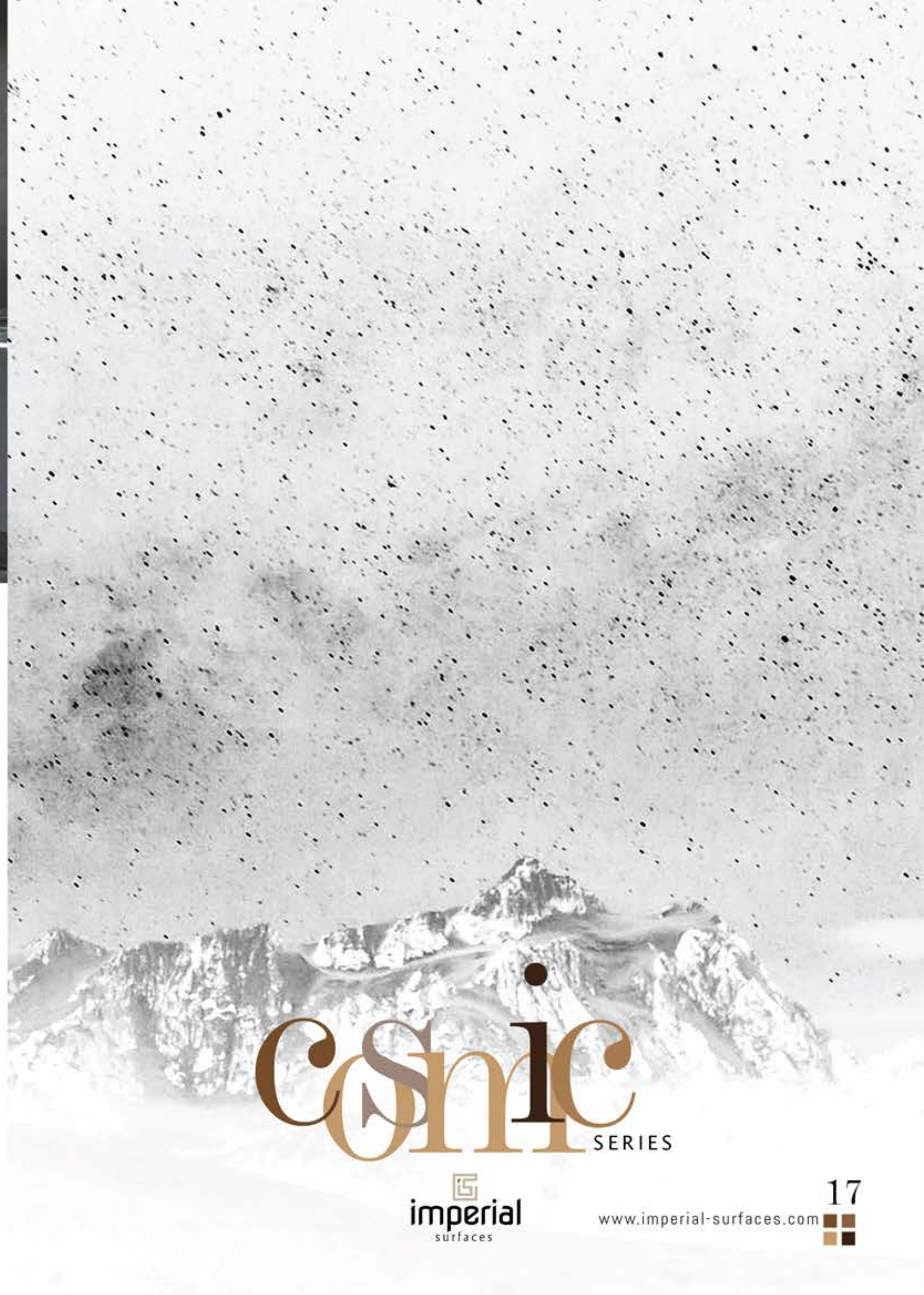
Carrara Classic



Carrara Lace



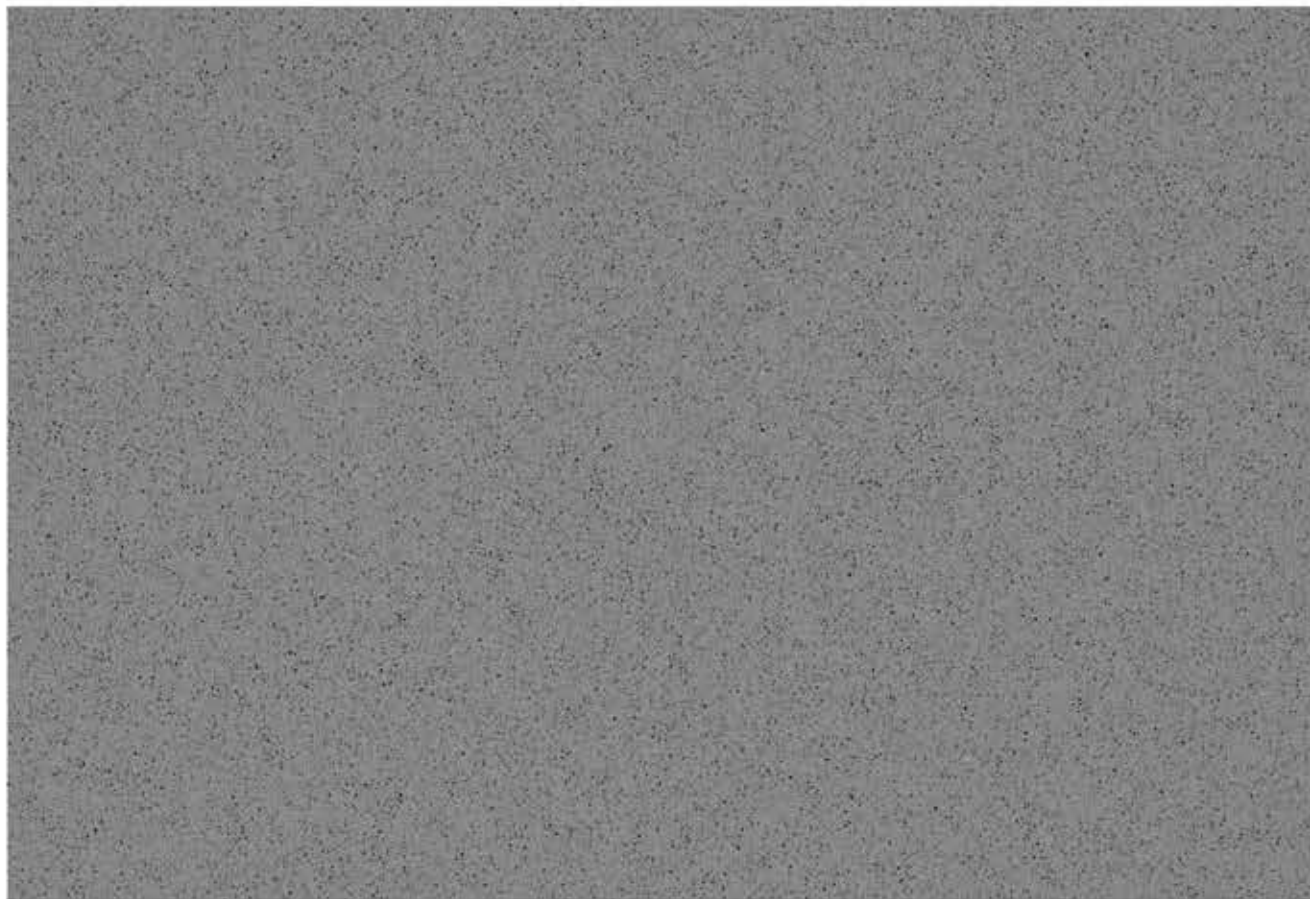
Aramis



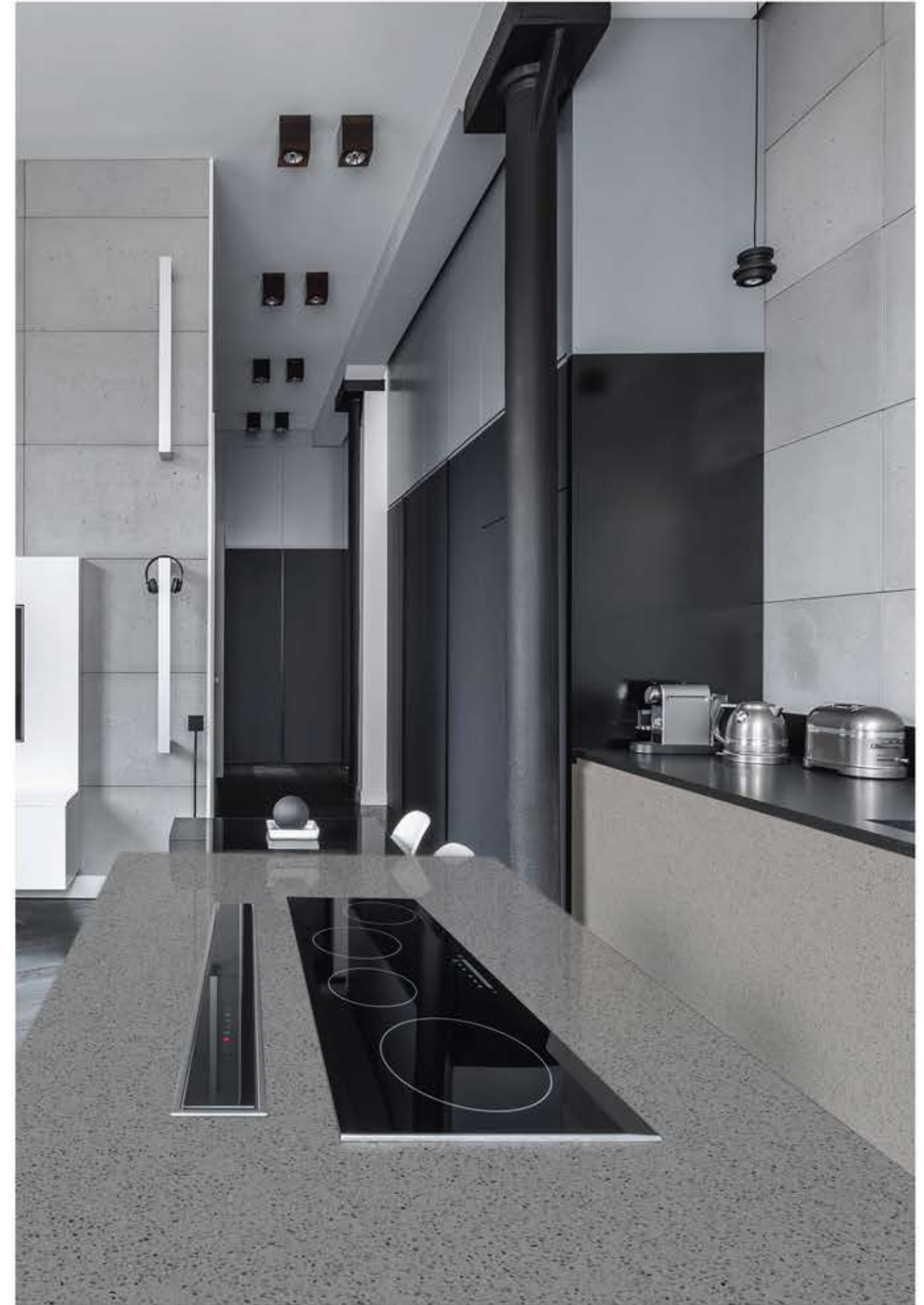
Lunar Grey

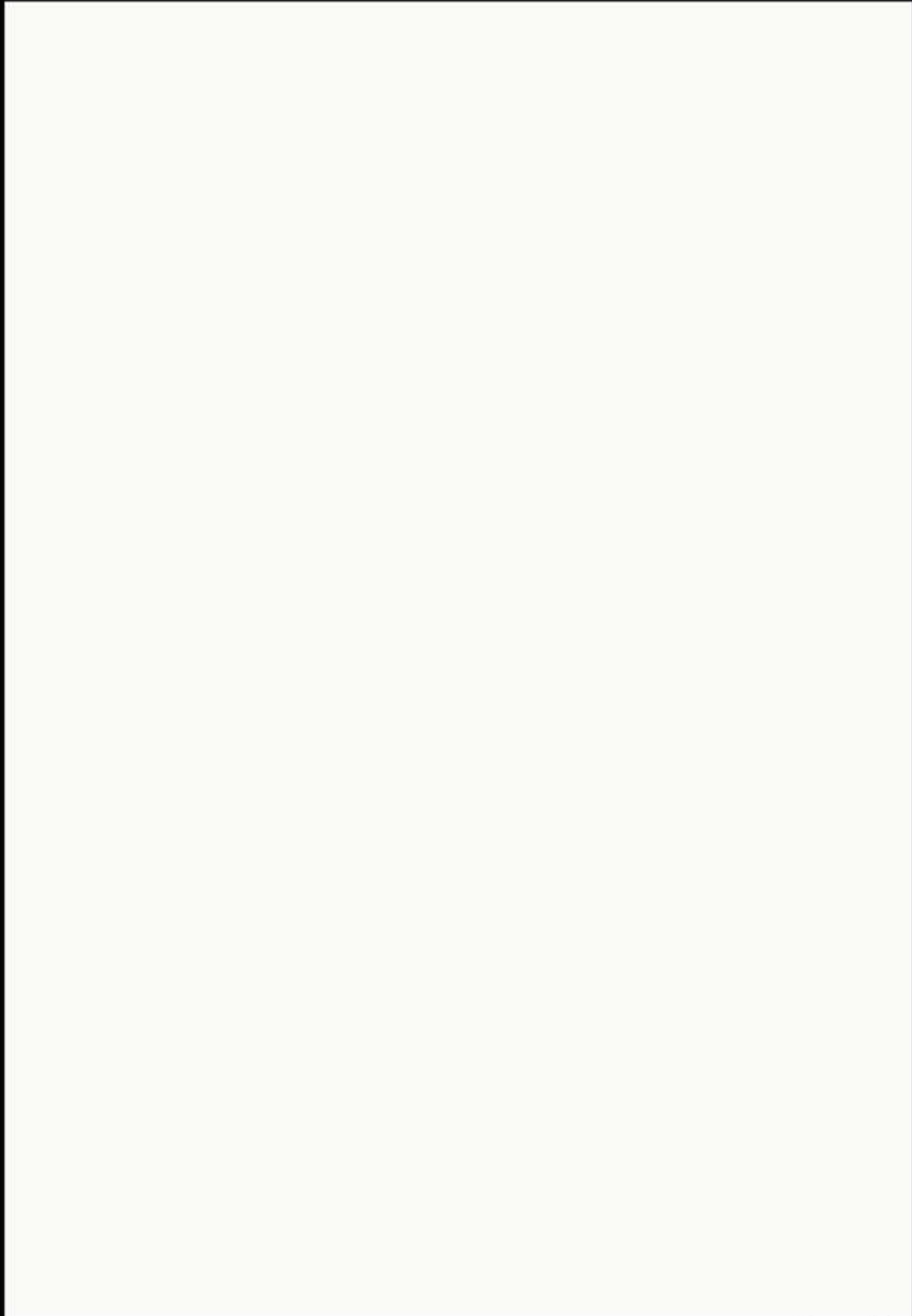


Ash Grey

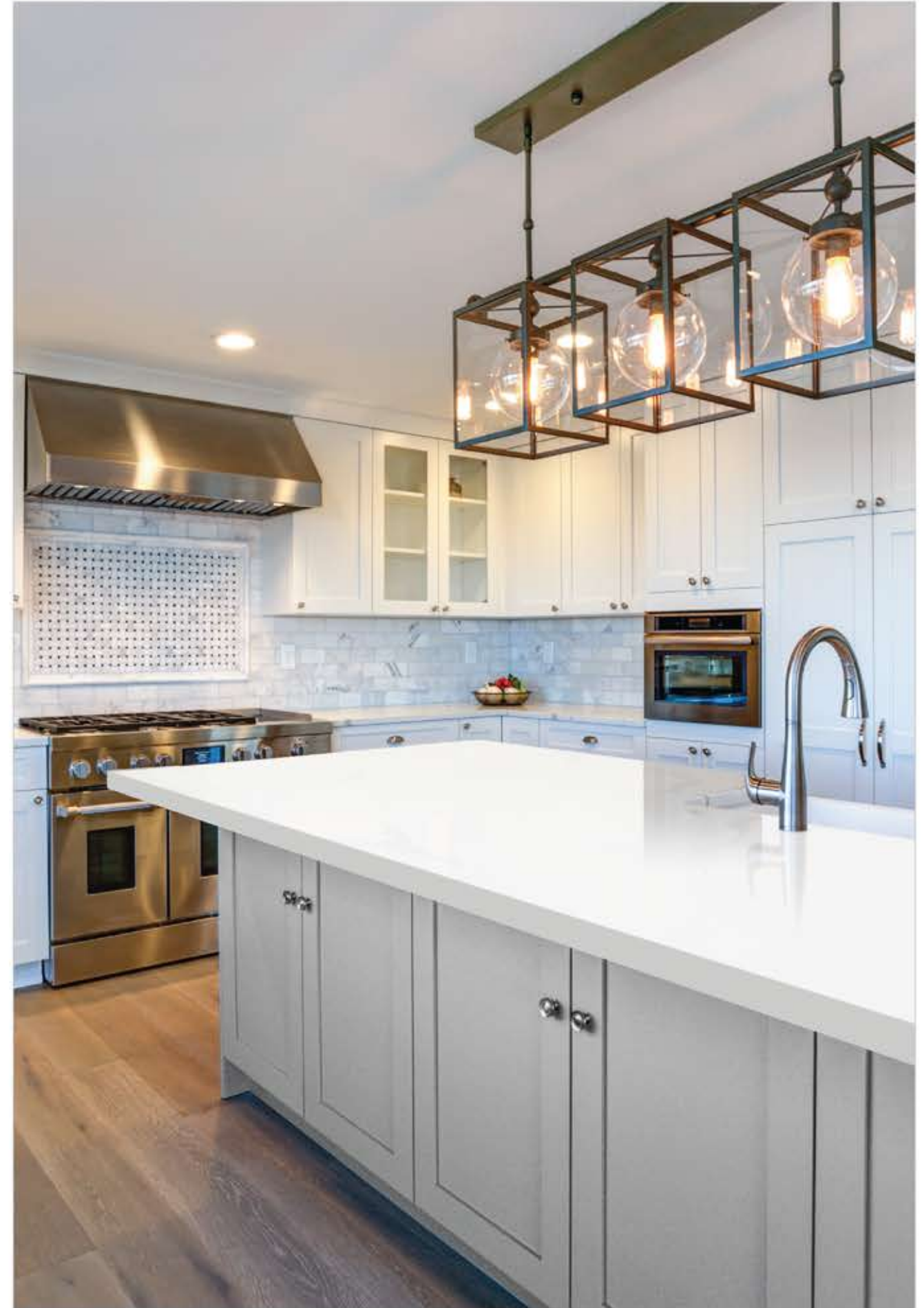


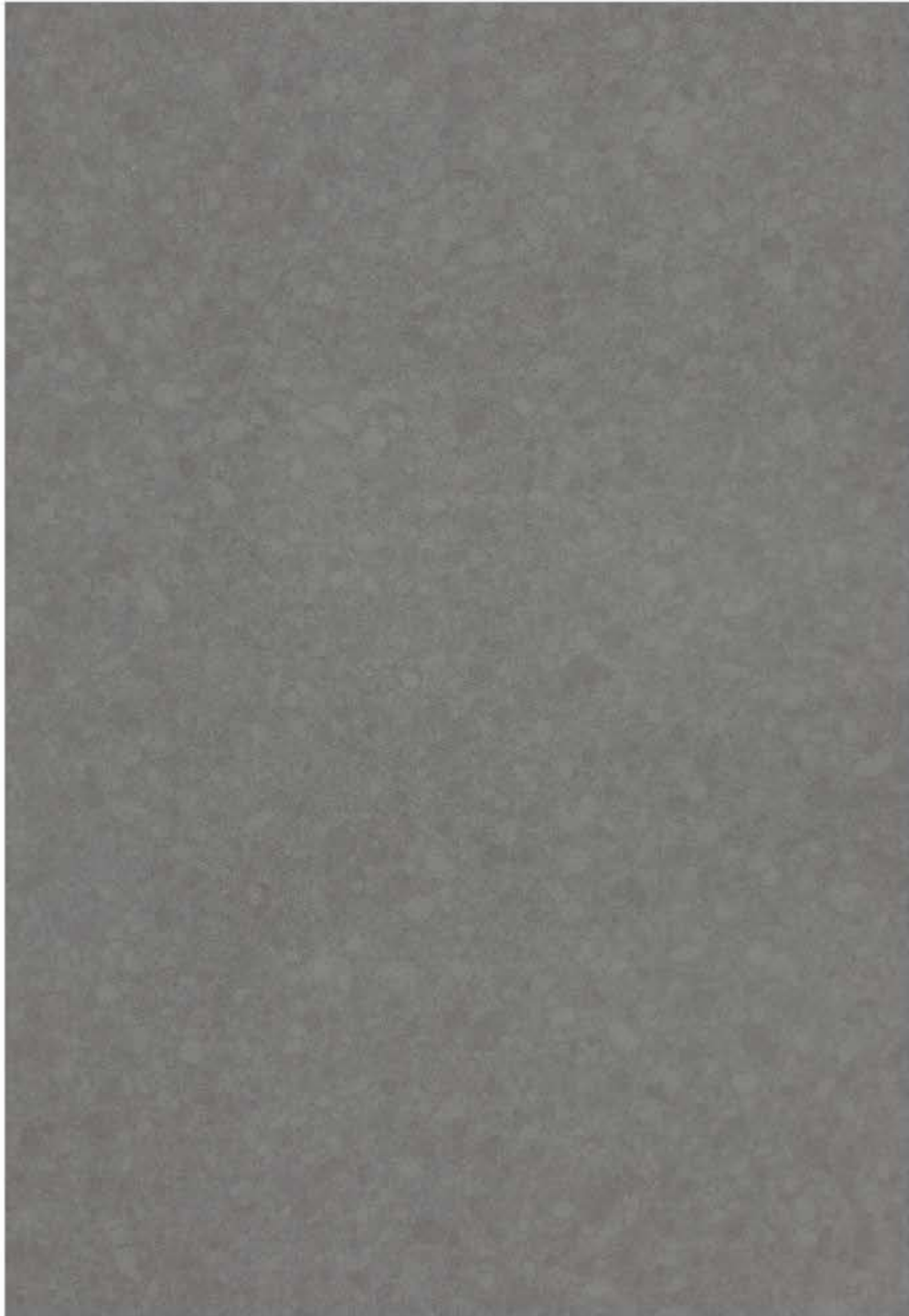
Silver Grey





Pure White



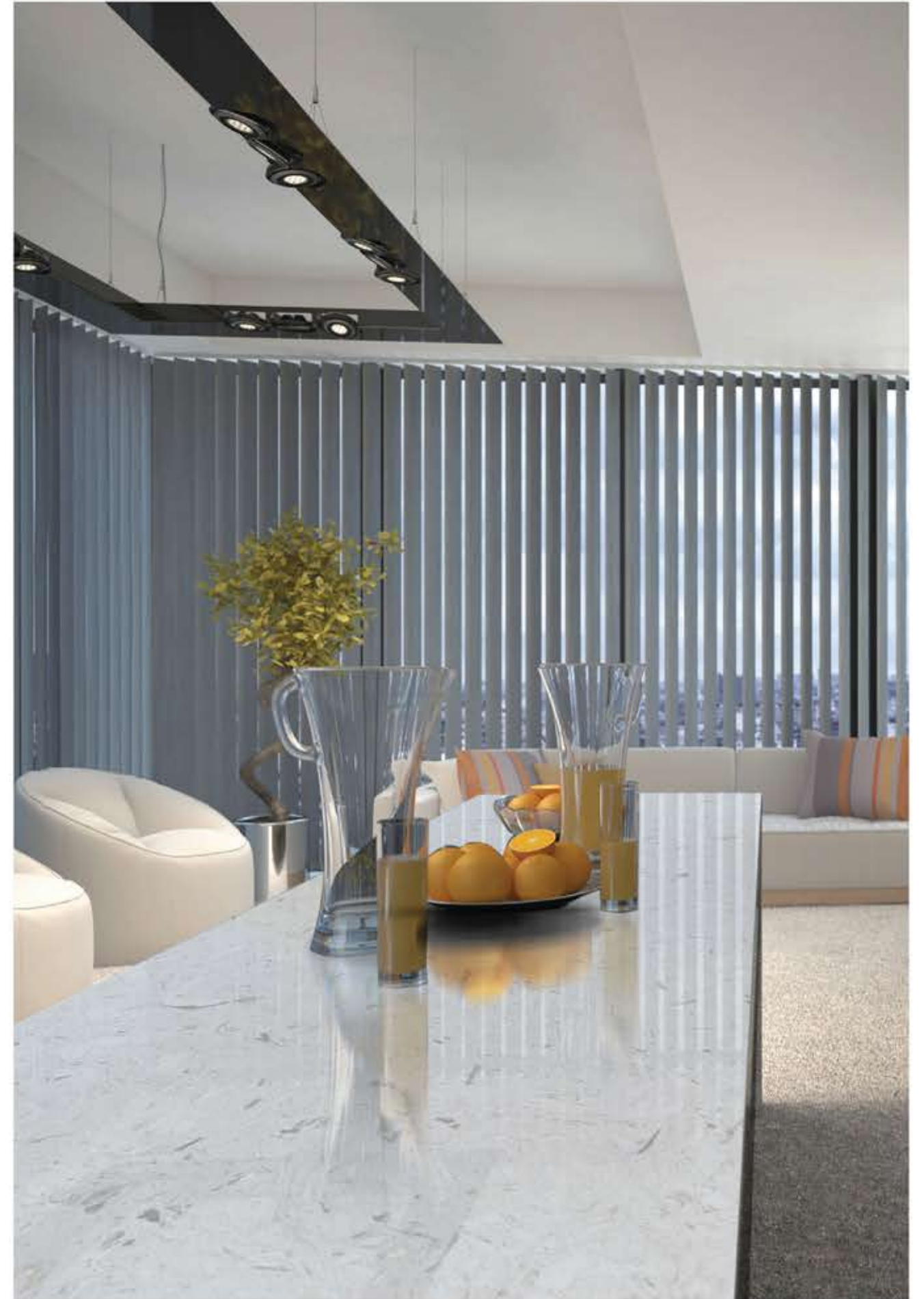


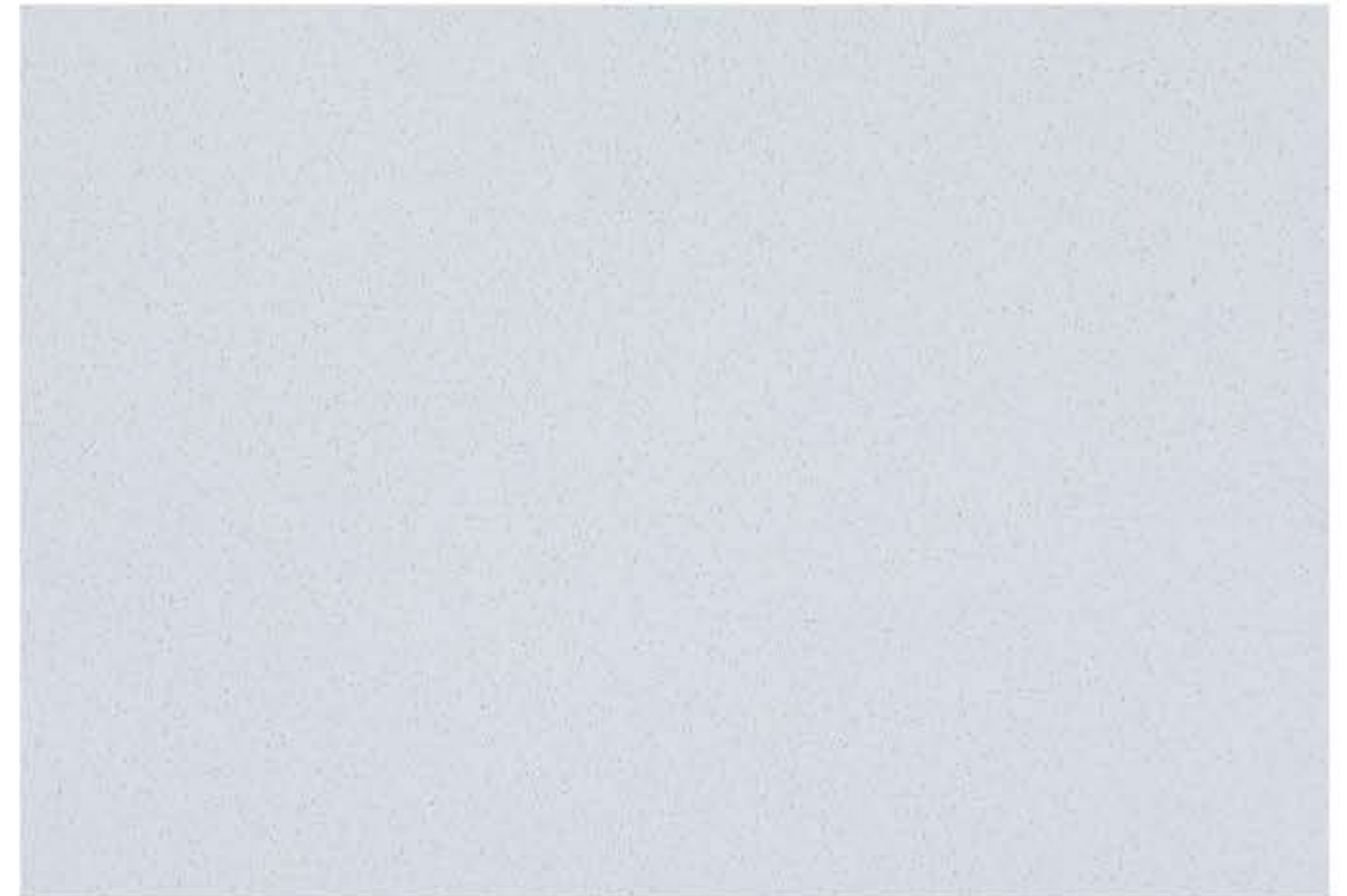
Armani Grey





Alpine White





Bianco Snow



Sparkle White



Crystal Beige



Winter White





Sparkle Black



www.imperial-surfaces.com

Quartz Stone Technical Specifications

Property	Results	Method
Water Absorption	<0.05%	ASTM C97-09
MOH's Hardness	6.5-7	MOH'S Hardness Scale
Thermal Shock	No Damage, Passed 5 Cycles	ASTM C484
Compressive Strength	24000 Psi	ASTM C170
Flexural Strength	8500 - 9000 Psi	ASTM C880
Moisture Absorption	Negligible	ASTM C97
Abrasion Resistance	21.5 mm	ASTM C1253
Density	2.4 g/cm ²	ASTM C373
Cigarette Test	Unaffected	ANSI Z124.6
Stain Resistance	Unaffected	ANSI Z124.6
Bond Strength	205 Psi	ASTM C482
Wear Resistance	Unaffected	ANSI Z124.6
Thermal Expansion	2.5 x 10 ⁻⁵ in/f	ASTM C531
Chemical Resistance	Unaffected	ASTM C650
De-Icing Resistance	Unaffected	ASTM C672
Freeze-Thaw Resistance	No Damage, Passed 15 Cycles	ASTM C1026
Surface Burning Characteristics	17 (Class A/1 Rating)	ASTM E84

Slab Size : 3500 X 2000 mm (138" X 79") | 3225 X 1625 mm (127" X 64)
3200 X 900 mm (126" X 35.5") | 3150 X 1450 mm (124" X 57")

THICKENSS : 30 mm, 20 mm, 15 mm

Customized size is available on request



Imperiaal Grani Marmo Pvt. Ltd

15-18 Marble Nagar
Sukher Industrial Area, National Highway 8,
Udaipur, Rajasthan
India 313001

www.imperial-surfaces.com

info@imperial-surfaces.com | info@imperialvanities.com

Ph: +91 9928717383

Follow us on:



www.imperialindia.com | +91 9928717383